

COOLJAW[®]

Hands-free Cold Therapy[®]

light years beyond
"FROZEN PEAS"[®]





Hands-free Cold Therapy®



Let Your Patients Shine

light years beyond "frozen peas"®

In the early nineties, Medico International Inc.® partnered with leading oral and maxillofacial surgeons to develop a new generation of hot/cold therapy. Our Cool Jaw® product utilizes a unique, patented pocket design that allows patients to fulfill their post-operative care instructions easily without compromising compression. Specifically designed for oral and facial surgeries, the Cool Jaw product line includes facial wraps and supports as well as a variety of gel packs.

Convenience

promote better patient compliance

The hands-free Cool Jaw system reduces post-operative swelling and discomfort and allows patients to recover in a convenient manner. Our latex-free wraps allow patients to easily insert and replace gel packs, ensuring the therapeutic effects compression and hot/cold therapy provide to the surgical area. All of our wraps are washable and feature Velcro® on top of the head for a fully adjustable fit. Our reusable, versatile gel packs are specifically designed for use with any of our wraps. They retain their desired temperature for a generous amount of time and are available in multiple sizes. Wraps and gel packs are available in a wide variety of combinations to best suit your patients' needs. They can be personalized with your logo for a unique post-operative solution for your patients.

"Because these gel packs are reusable, we have found that our patients tend to hang on to them 'just in case.' I personalize them because it is always nice for my patients to see a reminder that I took that extra step to ensure they had a positive recovery."

Louis F. Clarizio, D.D.S., P.A.
Portsmouth, NH





T-800C

COOLJAW®
Hands-free Cold Therapy®

Our soft spandex fabric is comfortable and protects the patient's skin from direct contact with the gel pack.

Cool Jaw® has paved the way to post-operative hot/cold therapy through the creation of our exclusive, hands-free patented design. Our Soft Stretch Wraps are made of elegant, satin spandex fabric that is extremely soft on the patient's skin. The wraps feature two rows of Velcro® closure at the top of the head for full adjustability and a continuous outer sleeve that extends cheekbone to cheekbone to ensure full coverage over the surgical area. Once adjusted, the wraps can easily be slipped on and off, ultimately contributing to the longevity of the Velcro® and the wrap. The T-800C, T-850C and T-900C wraps feature a built-in chin cup to help reduce slippage and maintain proper positioning.

Soft Stretch Wraps are specifically designed to fit our gel packs and allow patients to easily insert and replace packs without having to remove the wraps. We offer a variety of ordering options so you can build the Cool Jaw system that best meets your practice needs. Each wrap is available by itself or prepackaged with your choice of one, two or four gel packs. Ordering a wrap with four gel packs allows patients to alternate gel packs between freezings/heatings and ensures a seamless recovery period. All Soft Stretch Wraps have the ability to be customized with your practice logo. Please see page 29 for details.



T-800C

Patients can easily insert and replace gel packs without removing the wrap, thereby maintaining constant compression over the surgical area.



T-800

Our Soft Stretch Wraps feature two rows of Velcro® at the top of the head for an adjustable, universal fit that is easy to apply.



T-800C

Build Your Cool Jaw® System

1

Choose Your Wrap

Choose from 8 different styles of Cool Jaw facial wraps. From our Econo Wrap to our Soft Stretch Split Strap, all wraps are designed to be used with our array of gel packs.



2

Choose Your Gel Packs

Cool Jaw gel packs are specifically designed to fit in our facial wraps. Our cold therapy gel packs freeze solid and provide up to an hour of cool relief. Alternatively, our hot/cold therapy gel packs remain flexible when frozen. They can also be heated providing added versatility.



3

Choose Your Customization

Customize your facial wraps and gel packs with your practice logo and information for long lasting promotion. Choose from a variety of customization options. See page 29 for more information.



Relax
in comfort



light years beyond "FROZEN PEAS"®



T-800C

T-800 Cool Jaw® Soft Stretch Wrap - White (24/case)

T-800C Cool Jaw® Soft Stretch Wrap with Chin Cup - White, Blue, Black (24/case)

Our T-800 and T-800C Soft Stretch Wraps are made with an elegant, satin spandex fabric that is extremely soft on the patient's skin. They feature a continuous outer sleeve that extends cheekbone to cheekbone to ensure full coverage over the surgical area. This sleeve is specifically designed to fit our gel packs and allows patients to easily insert and replace gel packs without having to remove the wrap. Cool Jaw's patented design allows patients to always maintain constant compression over the surgical area, which can help reduce swelling.



The T-800C built-in chin cup helps maintain proper positioning and reduce slippage.



T-800



T-800C-4GP

The T-800C wrap also features a built-in chin cup that helps maintain proper positioning and reduce slippage. These jaw wraps feature two rows of Velcro® closure at the top of the head to provide a universal, adjustable fit. Each Soft Stretch Wrap is available with your choice of two or four gel packs. Four gel packs allow patients to rotate packs between applications.



T-900C Cool Jaw® Soft Stretch Split Strap with Chin Cup
White, Blue, Black (24/case)

The T-900C Soft Stretch Split Strap Wrap with Chin Cup features a two-strap Velcro® closure at the top of the head to ensure proper positioning, stability and comfort. Made from satin spandex fabric, the continuous outer sleeve extends cheekbone to cheekbone and allows for full coverage of the surgical area. Cool Jaw's T-900C wraps are specifically designed to fit our T-400, T-420 and T-425 gel packs.



"Cool Jaw® does add to the perception of us taking the extra step in making sure that the patient has a good experience by offering them the best in post-operative cold therapy."

Daniel Quon, D.M.D
Jackson, MS



bagged and ready to-GO...

Each wrap conveniently arrives in a recloseable bag, complete with your chosen gel packs and patient-friendly, preprinted instructions.

light years beyond "FROZEN PEAS" ®

only the price is
ECONO



T-807



T-807-2





T-807



T-807 Cool Jaw® Econo Wrap - White, Black (25/case)

Cool Jaw T-807 Econo Wraps are a great way to provide patients with convenient, hands-free hot/cold therapy in an economical manner. The Econo Wrap is a continuous poly-blend sleeve that wraps around the head and features two rows of Velcro® closure at the top of the head for an adjustable fit. Before applying, patients slide the gel packs into the sleeve. Our Econo Wraps are bulk-packed and arrive with your choice of gel packs. Econo Wraps can be customized with your office logo. See page 29 for details.



T-750

T-750 Cool Jaw® Wrap with Adjustable Pockets - White (24/case)

Cool Jaw Wraps with Adjustable Pockets are ideal for offices that want to precisely administer cold therapy to specific areas. The T-750 is a lightweight, plush elastic strap with two fabric pockets that can be moved to any desired area – including the chin. This strap features two rows of Velcro® closure at the top of the head for an adjustable, universal fit. Each wrap arrives with your choice of two or four Clear Cold Gel Packs and preprinted, patient-friendly instructions.



T-750-4

**T-850 Cool Jaw® High Compression
Soft Stretch Wrap - White (24/case)**

**T-850C Cool Jaw® High Compression Soft Stretch
Wrap with Chin Cup - White (24/case)**

Cool Jaw's High Compression Soft Stretch Wraps provide compression to the chin, jaw and ears. They are ideal for use after a variety of facial procedures and for TMJ pain management. These wraps feature a two-ply satin spandex support strap and two rows of Velcro® closure at the top of the head for a universal, adjustable fit. A built-in outer sleeve extends cheekbone to cheekbone and accommodates gel packs for convenient, hands-free hot/cold therapy. Since the High Compression Soft Stretch Wraps have an extra ply of fabric, they may also be used as a support wrap without gel packs. Available with and without a chin cup, as per the desired use. See page 29 for customization options.



T-850C



T-950

T-950 Cool Jaw® Wrap with Contour Fit - Black (24/case)

The T-950 Cool Jaw Wrap with Contour Fit is made with lightweight, supportive fabric and is designed with a fit that enhances recovery. Ergonomically designed, this Cool Jaw® wrap features two rows of Velcro® at the top of the head for a universal, adjustable fit. A continuous, contoured outer sleeve extends cheekbone to cheekbone and is designed to accommodate our gel packs. This allows patients to insert and replace gel packs without having to remove the wrap. Our patented design thereby allows patients to maintain constant compression over the surgical area, which helps to reduce swelling. The T-950 is ideal for immediate use following wisdom teeth removal, reconstructive jaw surgery and dental implants. They are also great for use with TMJ and other oral and maxillofacial jaw surgeries that require compression and hot/cold therapy.



T-950-4GP



COOLJAW®

by Medico International Inc.®

1.877.411.7009
www.cooljaw.com

COOLJAW

by Medico International

1.877.411.7009
www.cooljaw.com

COOLJAW

by Medico International

1.877.411.7009
www.cooljaw.com

COOLJAW®

by Medico International Inc.

1.877.411.7009
www.cooljaw.com

GLITTER

shine bright

T-420 Cool Jaw® Hot/Cold Gel Pack - 3" x 6" (48/case)

The T-420 Hot/Cold Gel Packs are sturdy, reusable gel packs that offer two advantages – they remain pliable when fully frozen and can be heated. Frozen pliability allows patients to achieve a better contour to the face, while the ability to use heat therapy allows for more post-operative therapy options. Due to its consistency, this pack will not settle when placed in any direction, thus ensuring uniform hot/cold therapy. This slim gel pack arrives with preprinted, patient-friendly instructions and can be used alone or in combination with most Cool Jaw facial wraps. See page 29 for customization options.

Colors: Black Glitter, Gold Glitter, Ocean Blue, Pink Glitter, Silver Glitter, White Glitter



T-800C-4GG

just can't
BEAD
it

T-425 Cool Jaw® Hot/Cold Gel Bead Pack - 3" x 6" (48/case)

Our T-425 Hot/Cold Gel Bead Packs offer two advantages – they remain pliable when fully frozen, and they can be heated. Like the T-420 Hot/Cold Gel Packs, the T-425 Hot/Cold Gel Bead Packs shape to the patient's face, allowing for continuous hot/cold therapy. The reusable 3" x 6" gel pack can be used alone or in combination with our patented wraps. Each T-425 Hot/Cold Gel Bead Pack arrives with preprinted, patient-friendly instructions for use. The T-425 gel packs are available for customization - see page 29 for details.

Colors: Green Peas, Orange Burst, Pink Pop, Purple Rain



T-800C



T-800C-4GP



T-800C-2PR





Vanilla



Cool Blue



Gold Glitter



Grape



Pink Ice



Kiwi



Mango



Black Glitter



White Glitter

coolest gel packs a-ROUND



Silver Glitter

Pink Glitter

T-430 Cool Jaw® Soft-sided Round Gel Pack - 4" Dia. (50/case)

Cool Jaw's T-430 Soft-sided Round Gel Pack is ideal for a variety of cold therapy applications. These reusable gel packs are 4" in diameter and remain flexible when frozen, allowing for uniform cold therapy. They feature one soft-sided surface that shields skin from direct contact with the frozen pack. They are a convenient, comfortable and economical cold therapy application for your patients that can easily be customized with your logo.

Colors: Black Glitter, Cool Blue, Gold Glitter, Grape, Kiwi, Mango, Pink Glitter, Pink Ice, Silver Glitter, Vanilla, White Glitter

T-440 Cool Jaw® Soft-sided Round Gel Pack

6" Dia. (25/case)

Bigger is better with our 6" diameter round, cold therapy gel pack. Remains flexible when frozen and features a soft-sided backing to protect the skin. The T-440 is reusable and ideal for a variety of applications, such as after wisdom teeth extractions and dental implants. See page 29 for customization options.

Colors: Cool Blue, Pink Ice



T-440



T-460



T-460 Cool Jaw® Oval Hot/Cold Gel Pack - 10.25" x 5.25" (12/case)

Cool Jaw's oversized, oval T-460 gel pack is the perfect solution for body aches and pains. This reusable pack is microwavable for heat therapy and freezable for cold therapy. Remains flexible when frozen. The size of the T-460 makes it suitable for TMJ, dental implants and oral surgery.

go
LONG

COOLJAW®
by Medico International Inc.®
1.877.411.7009
www.cooljaw.com

T-445 Cool Jaw® Hot/Cold Therapy Long Gel Pack
3" x 14" (24/case)

Go long with our T-445 14" Hot/Cold Therapy Gel Pack. Designed for use with our T-800, T-807 and T-850 jaw wraps to provide full thermal coverage from ear to ear. This sturdy, reusable gel pack remains pliable when fully frozen and can be heated. Frozen pliability allows patients to achieve a better contour to the face, while the ability to use heat therapy allows for more post-operative therapy options. Due to its size, this pack stays hot or cold for extended amounts of time and ensures uniform hot/cold therapy. Ideal for TMJ pain management as well as oral surgeries that require full jaw hot/cold therapy.

Color: Ocean Blue

hot/cold coverage from ear to ear



The T-400 3" x 5" gel pack is specifically designed to fit any of our hands-free facial wraps.



T-400 Cool Jaw® Clear Cold Gel Pack - 3" x 5" (50/case)

T-410 Cool Jaw® Clear Cold Gel Pack - 3" x 4" (100/case)

Cool Jaw's Clear Cold Gel Packs are ideal for a variety of cold therapy applications. These sturdy gel packs freeze solid and remain cold for extended periods of time. The T-400 gel packs are 3" x 5" and may be used with any of our hands-free facial wraps. The T-410 gel packs are 3" x 4" and designed for use in our T-470/T-480 cloth holders. Whether used alone or in combination with any of our wraps, Cool Jaw's Clear Cold Gel Packs are a great source for dependable, reusable cold therapy.

See page 29 for customization options.



solid as a-ROCK...

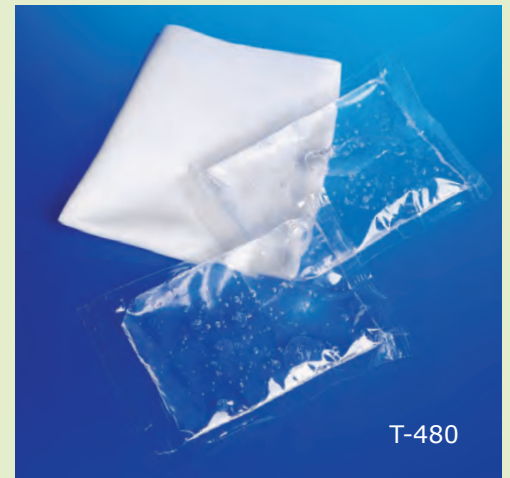
These clear sturdy gel packs freeze solid and remain cold for extended periods of time.



T-470



T-470



T-480

T-470 Cool Jaw® Cloth Holder with One Cold Gel Pack - White (100/case)

T-480 Cool Jaw® Cloth Holder with Two Cold Gel Packs - White (100/case)

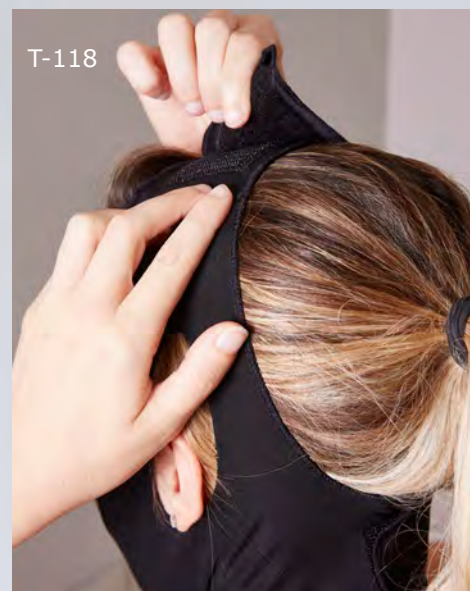
Cool Jaw T-470 and T-480 Cloth Holders are a highly economical method for administering post-operative cold therapy. Ideal for a variety of applications, patients apply the cloth holder containing a 3" x 4" reusable cold gel pack directly on the surgical area. These soft brushed poly cloth holders protect patients' skin from direct contact with the frozen gel pack. They arrive bulk packed and are available with one or two gel packs per cloth holder. By opting for two gel packs, patients can alternate packs between freezings to ensure there is no lapse in cold therapy. Gel packs and cloth holders can be customized with your office logo. See page 29 or details.



Hands-free Cold Therapy®



T-118



T-118

T-118 Two Strap Neck and Facial Support with Ear Openings - Beige, Black

T-124 Two Strap Neck and Facial Support - Beige

Ideal for use following submental liposuction, chin implants, TMJ pain management and a variety of neck and facial procedures, the T-118 and T-124 Facial Supports feature a secure, two strap design with dual adjustable Velcro® closure straps. These form fitting garments are easy to apply and provide even compression throughout the contour of the face and neck. Made with our breathable, self-wicking SuperSilky fabric, these supports are designed for enhanced patient comfort and healing. Available with or without ear openings. Sizes: Small, Medium, Large



T-124



make a
SPLASH

be bold, be colorful
promote your practice
make a statement

Promotion

let your practice speak for itself

Customization is a subtle, yet effective way to promote your practice and enhance your professional image. Cool Jaw helps you to continue promoting your practice long after the surgery date. Since our products are reusable, patients tend to save them 'just in case.' As a result, your information is easy to find and referrals increase.

Set your office image apart by taking advantage of our highly talented graphic design department. Cool Jaw's art department has virtually transformed the professional, elegant quality of customization within the industry. Our graphic artists will work directly with your staff to either reproduce your logo or to create a new logo for your office. We will print your logo and any additional information you desire onto our wraps and gel packs in four-color, high quality resolution.

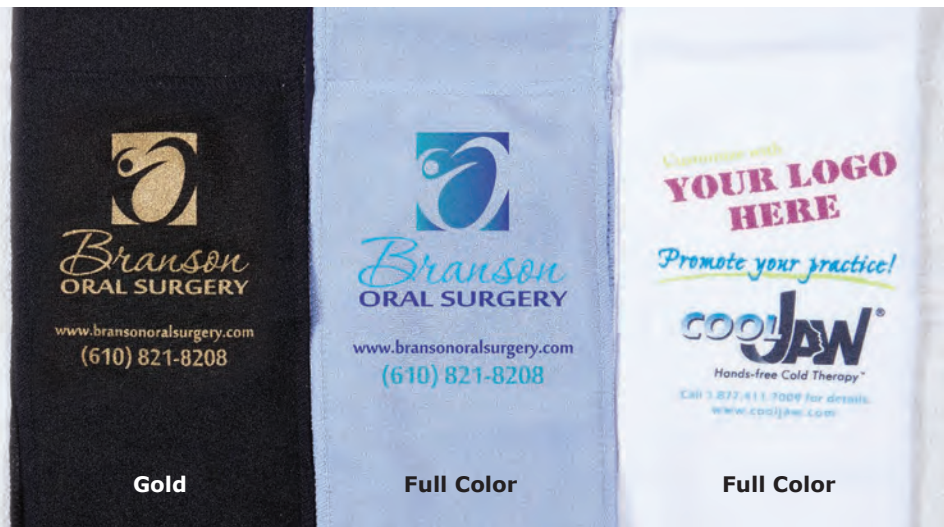
Wrap Customization

1-Sided Full Color Customization

1-Sided Black Wrap Customization
(White, Gold or Silver)

2-sided Customization

100 piece minimum for Black wraps



Gel Pack Customization

One Color Imprint (Black, White, Gold or Silver)

Full Color Label



your logo, ENDLESS possibilities





COOLJAW[®]

Hands-free Cold Therapy[®]



MEDICO[®]
INTERNATIONAL^{INC.}

Cool Jaw[®] is a division of Medico International Inc.[®]

Toll Free 1.877.411.7009 • Phone 610.253.7009 • Fax 610.253.1476
www.cooljaw.com • info@cooljaw.com • P.O. Box 3092 Palmer, PA 18043